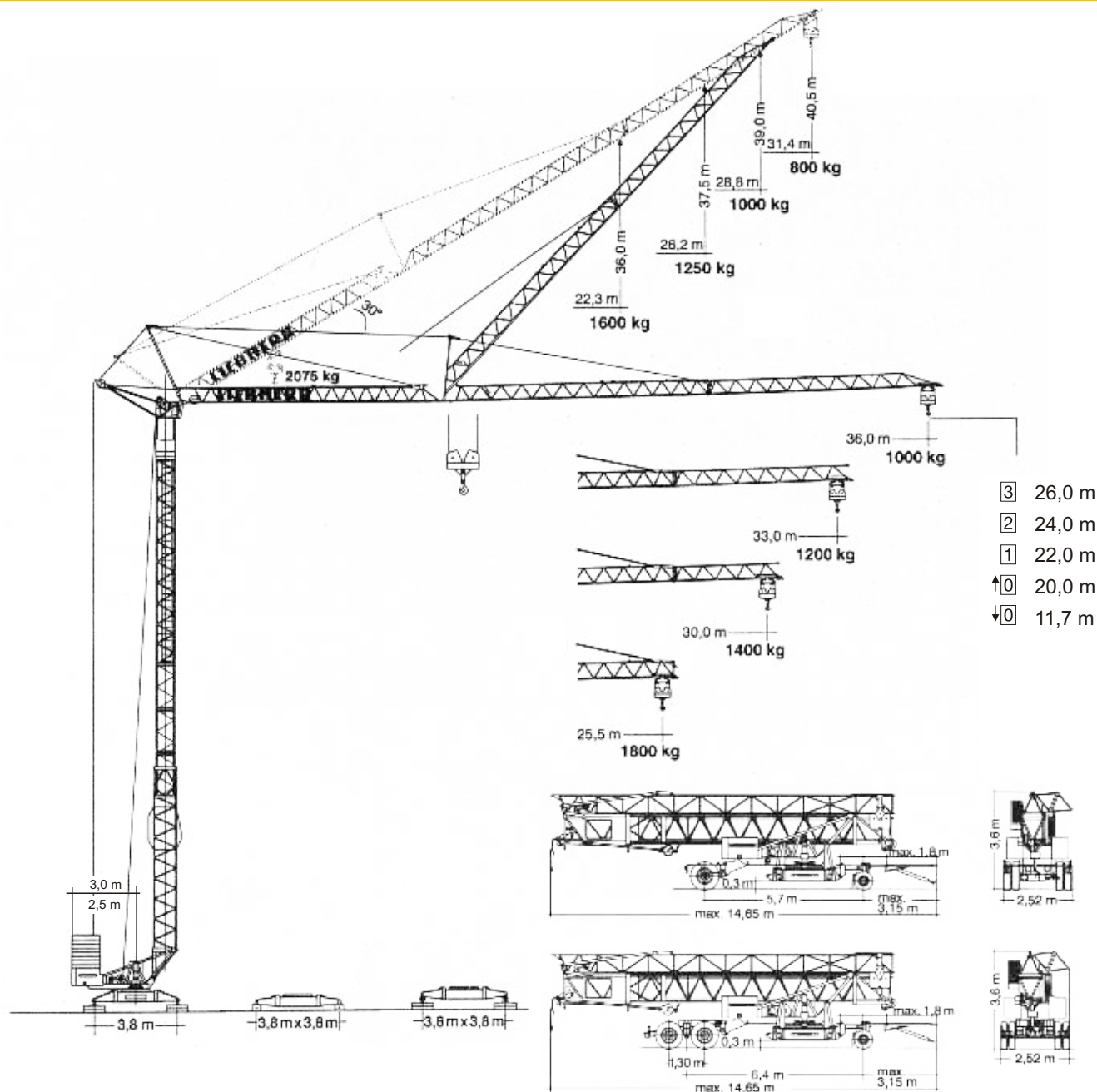



VĚŽOVÝ JEŘÁB samostavitelný 40 K

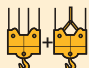



	protizát ž	váha konstrukce
	r = 3,0 m 22440 kg r = 2,5 m 26360 kg	 11760 kg

LIEBHERR

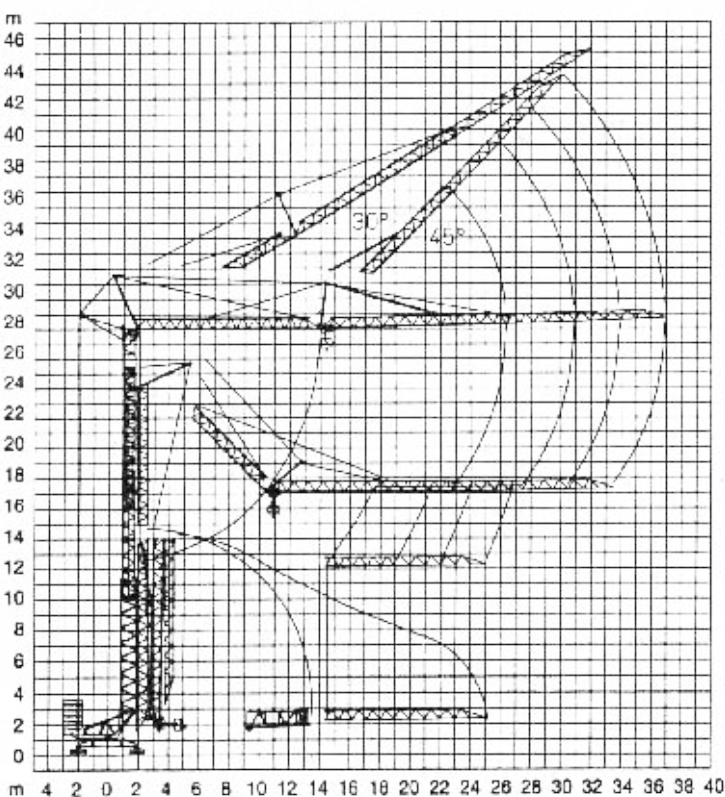
VYLOŽENÍ A NOSNOST

Vyložení m	m/kg		Nosnost																		
			19,0	20,0	21,0	22,0	23,0	24,0	25,0	25,5	26,0	27,0	28,0	29,0	30,0	31,0	32,0	33,0	34,0	35,0	36,0
36,0	3,3 – 19,8 2075		2075	2050	1930	1825	1730	1645	1565	1525	1490	1425	1365	1305	1255	1205	1155	1115	1075	1035	1000
33,0	3,3 – 20,9 2075		2075	2075	2070	1955	1855	1765	1680	1640	1600	1530	1465	1405	1350	1295	1245	1200			
30,0	3,3 – 21,6 2075		2075	2075	2075	2030	1925	1830	1745	1700	1665	1590	1520	1460	1400						
25,5	3,3 – 22,6 2075		2075	2075	2075	2075	2035	1935	1845	1800											



m	m/kg		m/kg																					
			10,0	11,0	12,0	13,0	14,0	16,0	18,0	20,0	22,0	24,0	25,5	26,0	27,0	28,0	29,0	30,0	31,0	32,0	33,0	34,0	35,0	36,0
36,0	3,3 – 11,4 4000	- 19,8 2000	4000	4000	3745	3385	3080	2605	2250	1975	1750	1570	1450	1415	1350	1290	1230	1180	1130	1085	1040	1000	960	925
33,0	3,3 – 12,0 4000	- 20,9 2000	4000	4000	4000	3625	3300	2795	2415	2120	1885	1690	1565	1525	1455	1390	1330	1275	1220	1170	1125			
30,0	3,3 – 12,4 4000	- 21,6 2000	4000	4000	4000	3755	3425	2900	2505	2200	1955	1755	1625	1590	1515	1445	1385	1325						
25,5	3,3 – 12,9 4000	- 22,6 2000	4000	4000	4000	3965	3615	3065	2650	2330	2070	1860	1725											


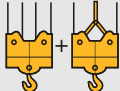
m	m/kg		Šikmý výložník 30° m/kg																				
			14,0	15,0	16,0	17,0	18,0	19,0	20,0	21,0	22,3	23,0	24,0	25,0	26,2	27,0	28,0	28,8	30,0	31,0	31,4		
36,0	3,3 – 14,7 2075		2075	2030	1875	1740	1620	1510	1420	1340	1240	1190	1130	1070	1010	970	930	895	850	810	800		
33,0	3,3 – 16,0 2075		2075	2075	2075	1925	1790	1680	1570	1480	1380	1330	1260	1190	1130	1080	1040	1000					
30,0	3,3 – 17,3 2075		2075	2075	2075	2075	1980	1850	1740	1640	1520	1470	1390	1320	1250								
25,5	3,3 – 18,0 2075		2075	2075	2075	2075	2075	1940	1830	1720	1600												

MONTÁŽNÍ SCHÉMA



PŘÍKONY A RYCHLOST EL. MOTORŮ

	rychlost	spot eba
	0 ↔ 0,9 U/min. sl./min tr./min	3,0 kW EDC
	20,0 / 40,0 m/min	1,3 / 2,3 kW

	rychlost	kg	m/min
11,0 kW 	1	2075	6,0
	2	2075	25,0
	3	1000	50,0
11,0 kW 	1	2000 4000	6,0 3,0
	2	2000 4000	25,0 12,0
	3	1000 2000	50,0 25,0

p ívodní kabel	jisti
63 m / 4x10 mm ² / 380 V (KL)	21 kVA