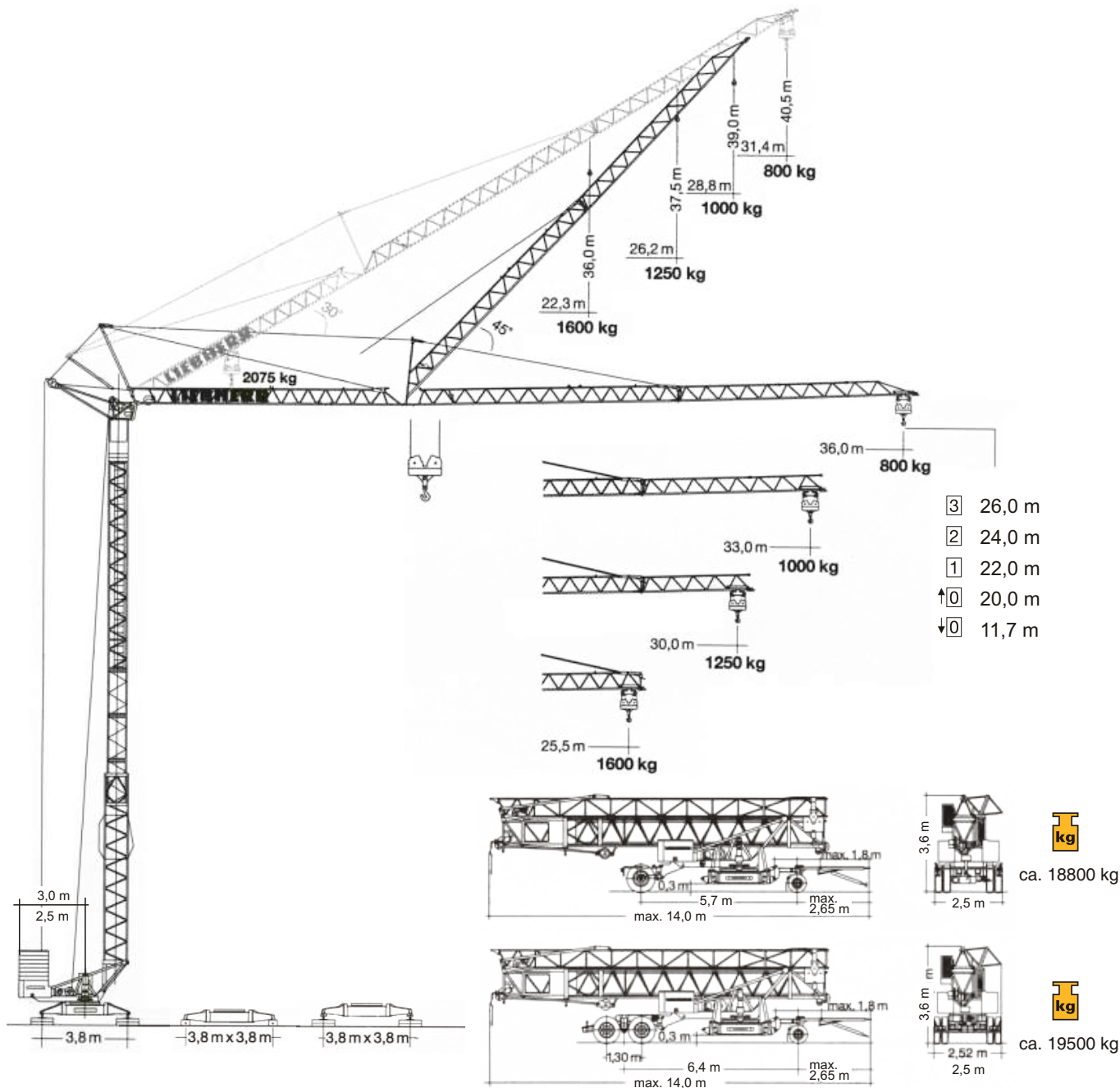


VĚŽOVÝ JEŘÁB

samostavitelný


35 K

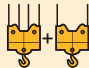



	protizát ž	váha konstrukce
	r = 3,0 m 19960 kg r = 2,5 m 23670 kg	 11560 kg

LIEBHERR

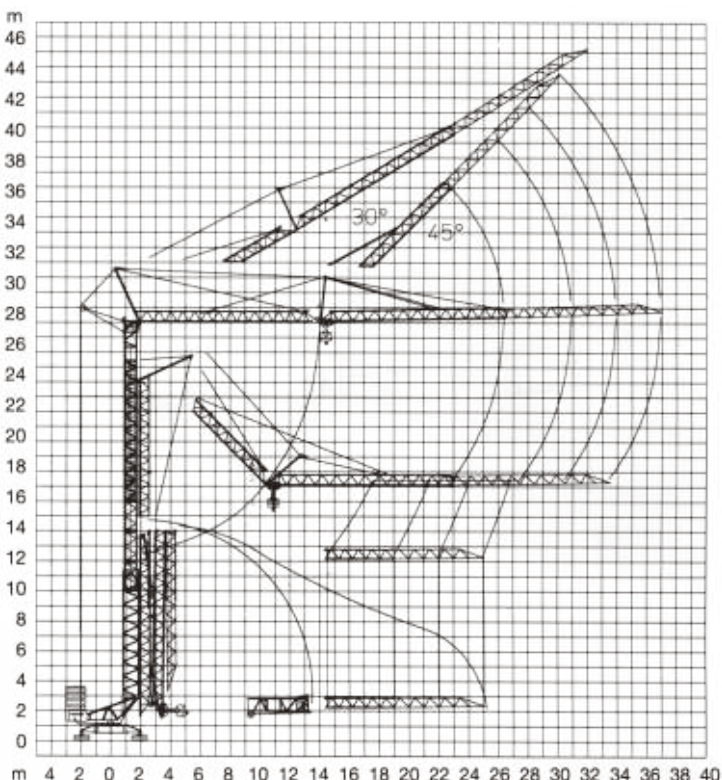
VYLOŽENÍ A NOSNOST

Vyložení m	m/kg		Nosnost																											
			16,1	17,0	18,0	19,0	20,0	21,0	22,0	23,0	24,0	25,0	25,5	26,0	27,0	28,0	29,0	30,0	31,0	32,0	33,0	34,0	35,0	36,0						
36,0	3,3 – 19,8 2075		2075	2040	1900	1780	1670	1570	1490	1410	1330	1270	1250	1210	1150	1100	1050	1010	970	930	890	860	830	800						
33,0	3,3 – 20,9 2075		2075	2075	2075	1970	1850	1740	1650	1560	1480	1410	1375	1340	1280	1230	1170	1130	1080	1040	1000									
30,0	3,3 – 21,6 2075		2075	2075	2075	2075	2040	1930	1820	1730	1640	1560	1520	1490	1420	1360	1300	1250												
25,5	3,3 – 22,6 2075		2075	2075	2075	2075	2075	2020	1910	1810	1720	1640	1600																	


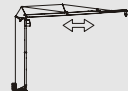
m	m/kg		Nosnost																											
			10,1	11,0	12,0	13,0	14,0	16,0	18,0	20,0	22,0	24,0	25,5	26,0	27,0	28,0	29,0	30,0	31,0	32,0	33,0	34,0	35,0	36,0						
36,0	3,3 – 11,4 4000	- 19,8 2000	3890	3430	3070	2770	2520	2120	1830	1600	1410	1260	1175	1130	1080	1030	980	930	890	860	820	790	750	725						
33,0	3,3 – 12,0 4000	- 20,9 2000	4000	3790	3390	3060	2790	2350	2030	1780	1570	1410	1300	1270	1210	1150	1100	1050	1010	960	925									
30,0	3,3 – 12,4 4000	- 21,6 2000	4000	4000	3730	3370	3070	2600	2240	1970	1750	1560	1450	1410	1350	1280	1330	1175												
25,5	3,3 – 12,9 4000	- 22,6 2000	4000	4000	3910	3540	3220	2730	2360	2070	1840	1650	1525																	


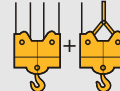
m	m/kg		Šikmý výložník 30°																											
			14,0	15,0	16,0	17,0	18,0	19,0	20,0	21,0	22,3	23,0	24,0	25,0	26,2	27,0	28,0	28,8	30,0	31,0	31,4									
36,0	3,1 – 14,7 2075		2075	2030	1875	1740	1620	1510	1420	1340	1240	1190	1130	1070	1010	970	930	895	850	810	800									
33,0	3,1 – 16,0 2075		2075	2075	2075	1925	1790	1680	1570	1480	1380	1330	1260	1190	1130	1080	1040	1000												
30,0	3,1 – 17,3 2075		2075	2075	2075	2075	1980	1850	1740	1640	1520	1470	1390	1320	1250															
25,5	3,1 – 18,0 2075		2075	2075	2075	2075	2075	1940	1830	1720	1600																			

MONTÁŽNÍ SCHÉMA



PŘÍKONY A RYCHLOST EL. MOTORŮ

	rychlost	spot eba
	U/min. 0 ↔ 1,0 sl./min tr./min	2,2 kW
	20,0 / 40,0 m/min	1,3 / 2,3 kW

	rychlost	kg	m/min
11,0 kW 	1	2075	6,0
	2	2075	25,0
	3	1000	50,0
11,0 kW 	1	2000 4000	6,0 3,0
	2	2000 4000	25,0 12,5
	3	1000 2000	50,0 25,0

p ívodní kabel	jisti
63 m / 4x10 mm ² / 380 V	21 kVA