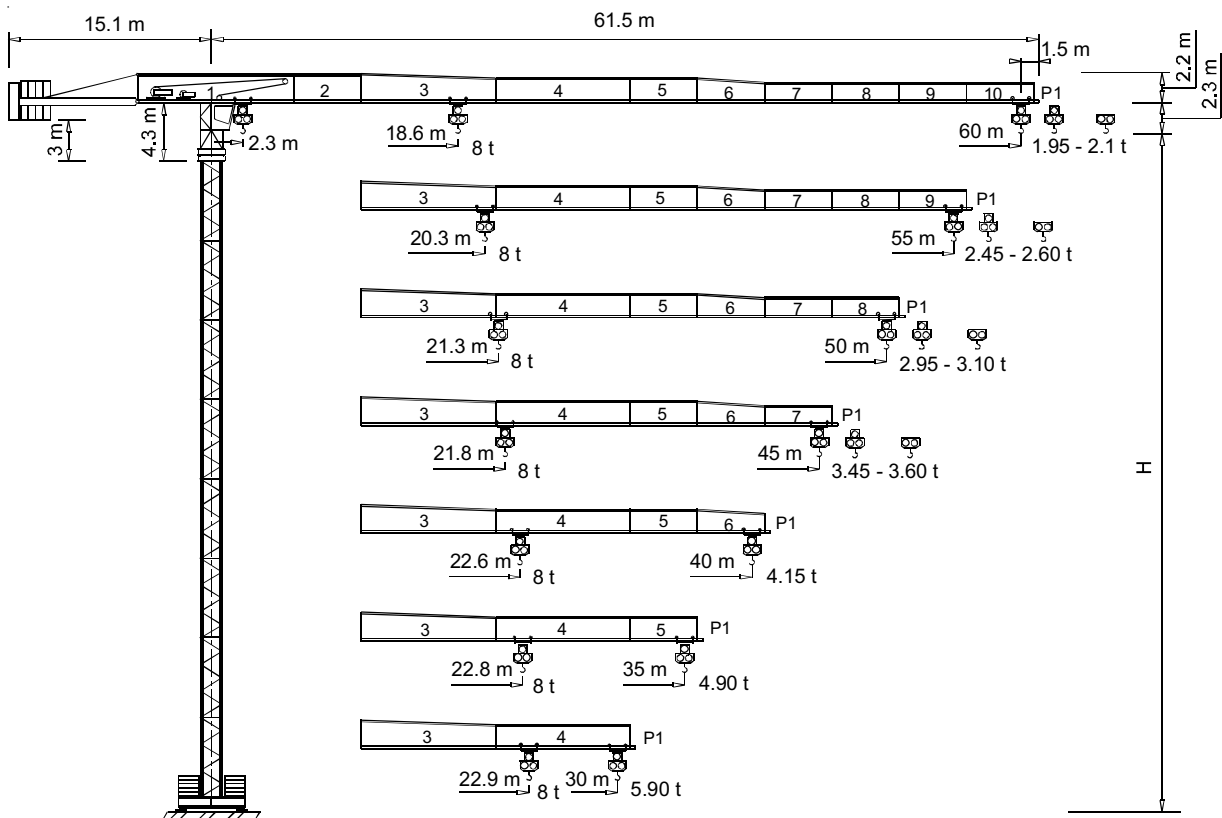




## Gru a torre "Flat Top"

"Flat Top" Tower Crane • Grue à tour "Flat Top"

"Flat Top" Turmdrehkran • Grua torre "Flat Top"



FEM 1.001 A3

THE ULTIMATE CRANE™

Dati illustrativi non impegnativi  
Con riserva di modifica senza preavviso

Specifications and data not binding  
Subject to modification without notice

Données techniques seulement indicatives  
Modifications réservées sans préavis

Angaben und Beschreibung unverbindlich  
Änderungen vorbehalten ohne weitere Mitteilung

Dibujos y datos sin compromiso  
Modificaciones reservadas sin preaviso

UTE.DOC.REV.004

“CTT 161-8 TS”

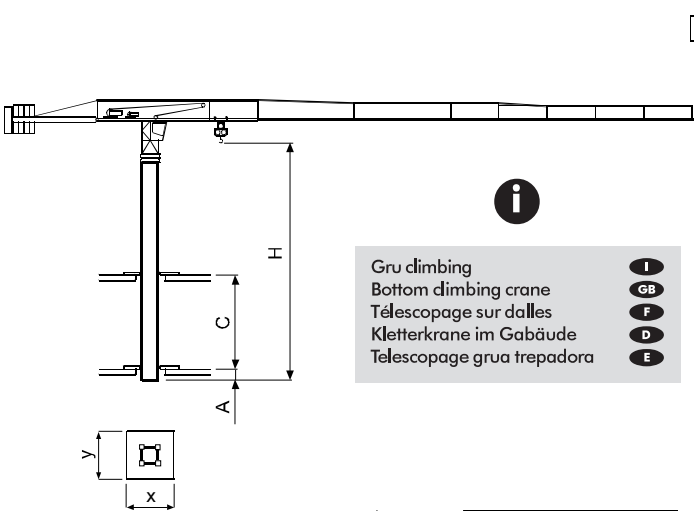


# CTT 161-8

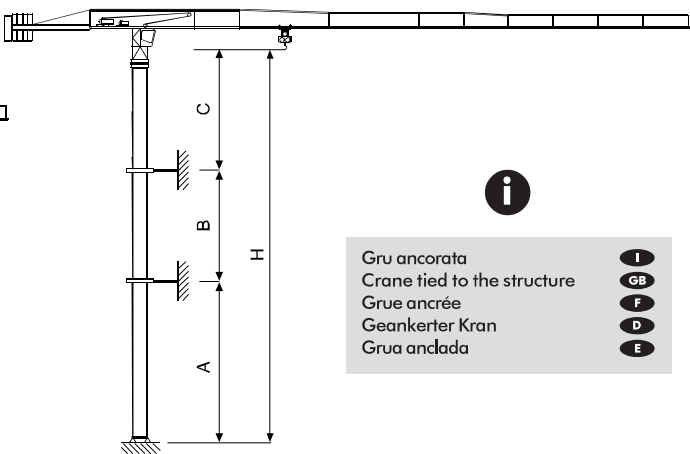
**Diagramma di portata / Load Diagram** (I, GB)    
 **Courbes de charges / Lastkurven** (F, D)    
 **Curvas de cargas** (E)

		CTT 161-8											
		10	15	20	25	30	35	40	45	50	55	60	
4 t	- 34.9 m	4	4	4	4	4	3.99	3.42	2.98	2.63	2.34	2.1	
4 t	- 33.96 m	4	4	4	4	4	3.86	3.28	2.84	2.48	2.19	1.95	
8 t	- 18.64 m	8	8	7.39	5.72	4.63	3.86	3.28	2.84	2.48	2.19	1.95	
4 t	- 38.1 m	4	4	4	4	4	4	3.78	3.3	2.91	2.6		
4 t	- 36.97 m	4	4	4	4	4	4	3.64	3.15	2.77	2.45		
8 t	- 20.26 m	8	8	8	6.31	5.11	4.27	3.64	3.15	2.77	2.45		
4 t	- 40.14 m	4	4	4	4	4	4	4	3.51	3.1			
4 t	- 38.91 m	4	4	4	4	4	4	3.87	3.36	2.95			
8 t	- 21.31 m	8	8	8	6.68	5.42	4.53	3.87	3.36	2.95			
4 t	- 41.06 m	4	4	4	4	4	4	4	3.6				
4 t	- 39.78 m	4	4	4	4	4	4	3.97	3.45				
8 t	- 21.78 m	8	8	8	6.85	5.56	4.65	3.97	3.45				
4 t	- 40 m	4	4	4	4	4	4	4					
8 t	- 22.57 m	8	8	8	7.13	5.8	4.85	4.15					
4 t	- 35 m	4	4	4	4	4	4						
8 t	- 22.76 m	8	8	8	7.2	5.85	4.9						
4 t	- 30 m	4	4	4	4	4							
8 t	- 22.92 m	8	8	8	7.26	5.9							

**Altre installazioni / Other configurations** (I, GB)    
 **Autres implantations / Aufstellmöglichkeiten** (F, D)    
 **Otras implantaciones** (E)



**Gru climbing** (I)  
**Bottom climbing crane** (GB)  
**Télescopage sur dalles** (F)  
**Kletterkrane im Gebäude** (D)  
**Télescopage grua trepadora** (E)



**Gru ancorata** (I)  
**Crane tied to the structure** (GB)  
**Grue ancrée** (F)  
**Geankerter Kran** (D)  
**Grúa anclada** (E)

	TS16	TS21
<b>C<sub>min</sub></b>		
<b>H<sub>max</sub></b>	i	i
<b>x</b>		
<b>y</b>		

	TS16 R1	TS21 R3	TS21 R4
<b>A<sub>min/max</sub></b>	30 / 36	30 / 45	45 / 65
<b>B<sub>min/max</sub></b>	17.7 / 23.6		
<b>C<sub>max</sub></b>	24	35	35
<b>H<sub>max</sub></b>	i		



# CTT 161-8

Torre **I**

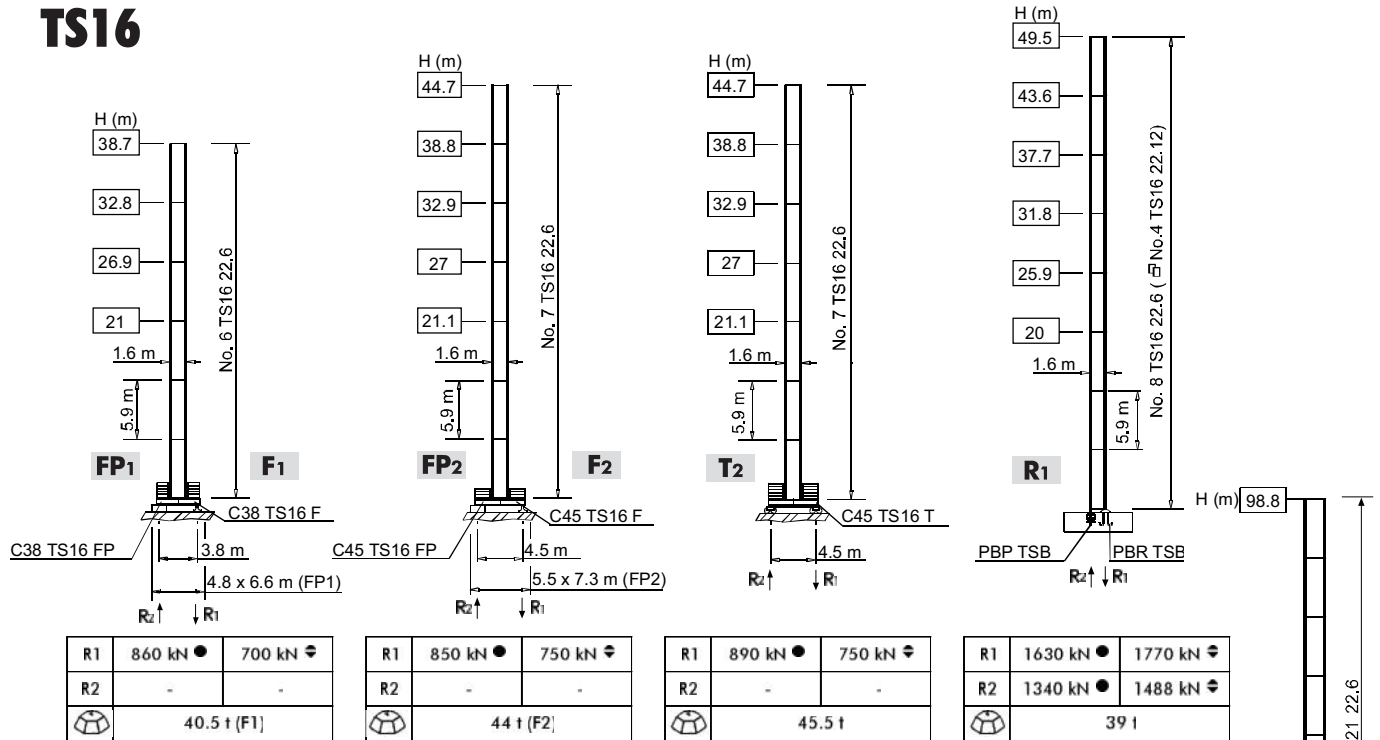
Tower **GB**

Tour **F**

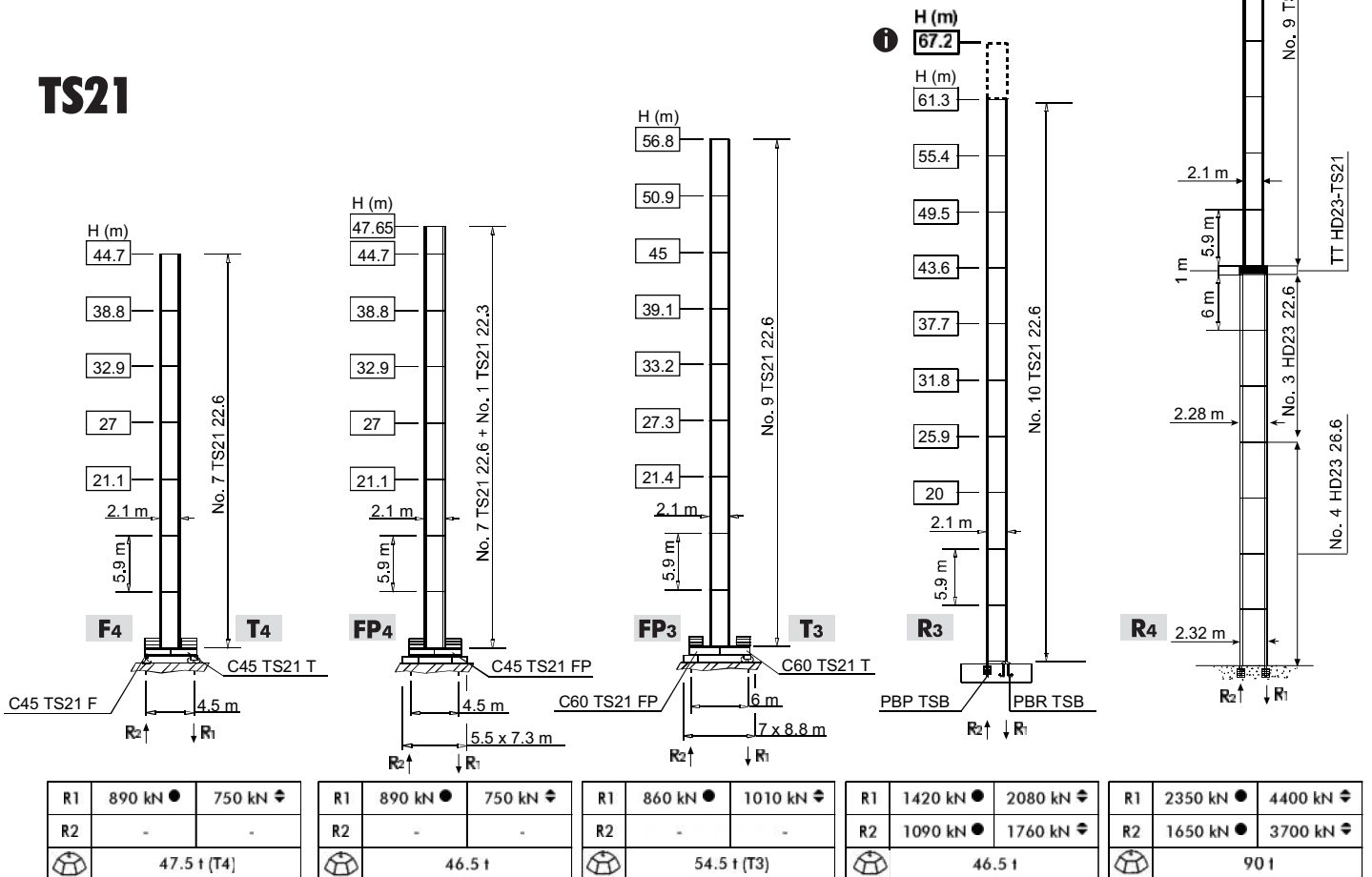
Turm **D**

Mástil **E**

## TS16



## TS21



H	Altezza massima s. g.	<b>I</b> Max. under hook height	<b>GB</b> Hauteur maxi. sous crochet	<b>F</b> Höchste Hackenhöhe	<b>D</b> Maxima altura bajo gancho	<b>E</b>
●	In servizio	In service	En service	In Betrieb	En servicio	
◆	Fuori servizio	Out of service	Hors service	Außer Betrieb	Fuera de servicio	
	A vuoto, senza zavorra, braccio max., altezza max.	Without load, without ballast, max. jib and max. height	A vide, sans lest, avec flèche et hauteur maximum	Ohne Last und Ballast, mit Maximalausleger und Maximalhöhe	Sin carga, sin lastre, con pluma y altura máxima	
	Alternativa	Alternative	Alternative	Alternativlösung	Alternativa	



# CTT 161-8

**Meccanismi**  
**Mechanisms**



**Mécanismes**  
**Antriebe**



**Mecanismos**



	24 APC 40 30 AFC 40	65 * kVA 70 * kVA	400 V - 50 Hz 400 V - 50 Hz / 460 V - 60 Hz
			 2000/14/CE

\* Gru senza traslazione / Crane without travelling equipment / Grue sans translation / Krane ohne Schienenfahren / Grúa sin traslación

		m/min	f	kW			
	<b>24 APC 40</b>		5	4	24	278 m	
			29	4			
			58	2			
			2.5	8			
			14.5	8			
	<b>30 AFC 40 (VARIANT)</b>			29	4	30	278 m 350 m (LEBUS)
				0 ⇨ 3	4		
				3 ⇨ 10	4		
				10 ⇨ 41	4		
				41 ⇨ 66	2.38		
			66 ⇨ 82	1.86			
			0 ⇨ 1.5	8			
			1.5 ⇨ 5	8			
			5 ⇨ 20.5	8			
			20.5 ⇨ 33	4.76			
	33 ⇨ 41	3.72					

	<b>DVF 3 5 D1 (VARIANT)</b>	0 ⇨ 6 ⇨ 32 ⇨ 64 m/min		5 kW
	<b>SSR 2 2 65</b>	0.7 r.p.m. (50 Hz)	0.84 r.p.m. (60 Hz)	2 × 65 Nm
	<b>▲ TAD 2RP 2M4</b>	0 - 24 m/min		2 × 4 kW
	<b>● TAD 2RG 4M3</b>			4 × 3 kW

	▲	●
	Max. H [m]	
<b>T<sub>2</sub></b>	38.8	> 38.8
<b>T<sub>3</sub></b>	39.1	> 39.1
<b>T<sub>4</sub></b>	38.8	> 38.8

	<b>I</b> Sollevamento	<b>I</b> Hoisting	<b>GB</b> Levage	<b>F</b> Heben	<b>D</b> Elevación	<b>E</b>
	Traslazione carrello	Trolleying	Distribution	Katzfahren	Distribución	
	Rotazione	Slewing	Orientation	Schwenken	Orientación	
	Traslazione	Travelling	Translation	Schienenfahren	Traslación	
	Direttiva sul livello acustico	Directive on noise level	Directive sur le niveau acoustique	Richtlinie für den Schall-Leistungspegel	Directiva sobre el nivel acustico	
	Consultateci	Consult us	Nous consulter	Auf Anfrage	Consultarnos	
	Potenza totale richiesta	Power requirements	Puissance totale nécessaire	Geforderte Stromstärke	Potencia necesaria	
	Alimentazione	Power supply	Alimentation	Stromversorgung	Alimentación	

## Gru Comedil s.r.l.

A Terex Company

Via S. Egidio 42/A, 33074 Fontanafredda (PN) - Italy  
Tel. (+39) 0434 567 311 - Telefax (+39) 0434 998631

Internet e-mail: info@comedil.com  
Internet home page: www.comedil.com

## Divisione Automontanti

Via Alessandrina, 25 - 20095 Cusano Milanino (MI) - Italy  
Tel. (+39) 02 613 16011 - Telefax (+39) 02 613 16034

Internet e-mail: info.CBR@comedil.com

[www.terex-cranes.com](http://www.terex-cranes.com)